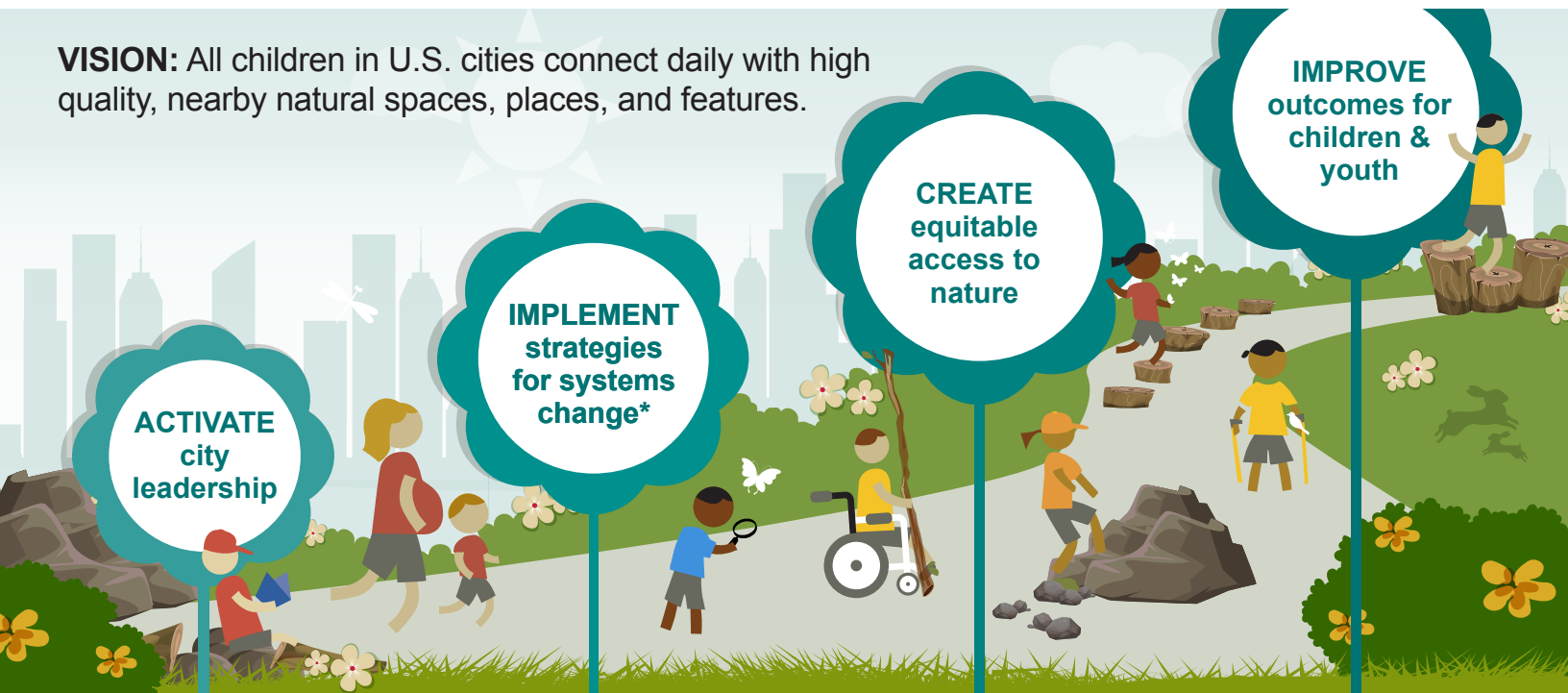


CITY THEORY OF CHANGE

VISION: All children in U.S. cities connect daily with high quality, nearby natural spaces, places, and features.



ACTIVATE city government with grassroots momentum for nature access

IMPLEMENT strategies to change the conditions that hold inequities in place*

CREATE sustainable, regular nature access for all children

IMPROVE child & youth development through regular connection to nature

- Engage city leaders, residents, youth, and key partners
- Leverage broad, inclusive input to create nature connections
- Convene agency leaders and partners
- Draw upon research showing the benefits of nature
- Build public will*
- Guide vision and strategy*

- Identify racial equity priorities within strategies
- Include nature access in policies, programs, and infrastructure
- Allocate staff and financial resources
- Build and leverage community relationships
- Share decision-making

- Elevate nature connections as a priority in policy and budgets
- Increase and improve nature access and infrastructure within a city
- Improve conditions for community wellness
- Increase time, number, and quality of experiences in nature for children of color

- Reduce stress/anxiety indicators
- Improve physical health indicators
- Improve mental health indicators
- Improve indicators for learning and academic performance
- Foster active citizenship and stewardship

CHANGE ADVANCES THROUGH NATURE ACCESS STRATEGIES:

Green Schoolyards 🌸 Nature-Smart Libraries 🌸 Out of School Time 🌸 Early Childhood Nature Connection
Youth Leadership Development 🌸 Green Career Exposure 🌸 Enhancing Nature in Public Spaces

A joint initiative of: